

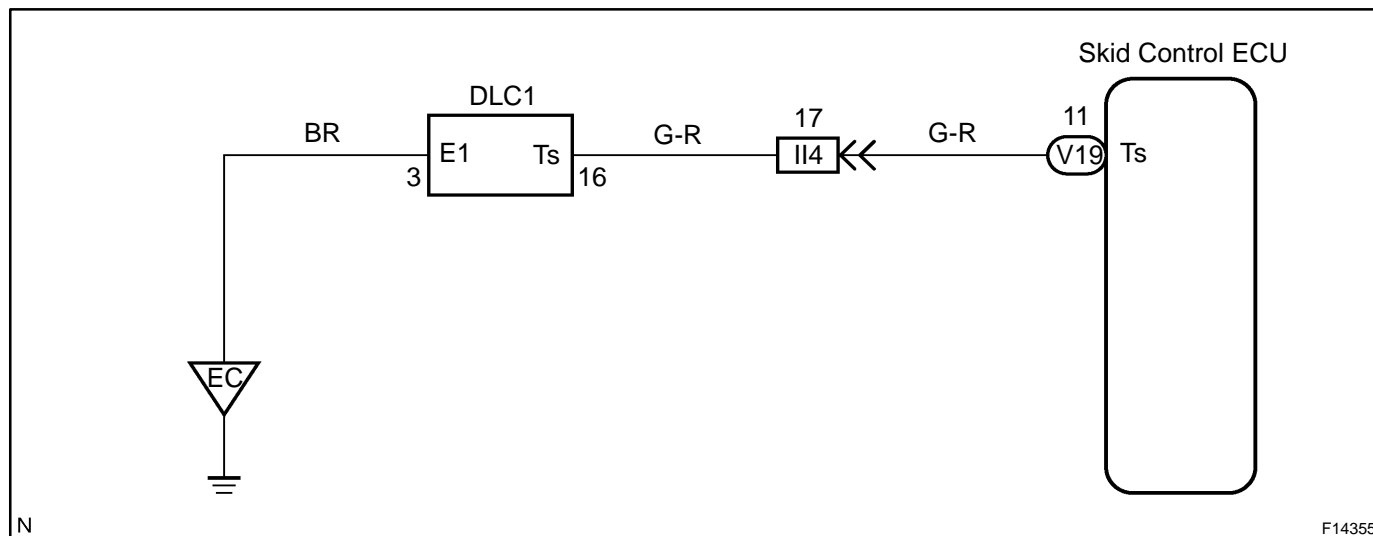
Ts Terminal Circuit

CIRCUIT DESCRIPTION

The sensor check circuit detects abnormalities in the speed sensor signal which cannot be detected by the DTC check.

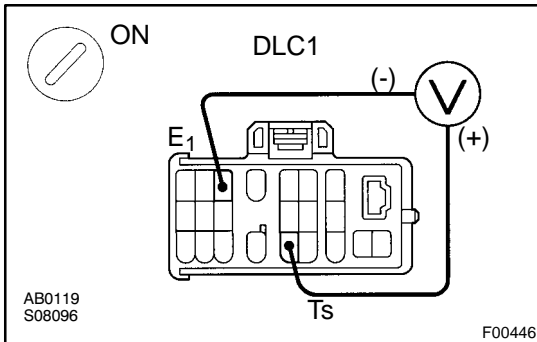
Connecting terminals Ts and E₁ of DLC1 or Tc starts the check.

WIRING DIAGRAM



INSPECTION PROCEDURE

- | | |
|---|--|
| 1 | Check voltage between terminals Ts and E ₁ of DLC1. |
|---|--|

**CHECK:**

- (a) Turn the ignition switch ON.
- (b) Measure voltage between terminals Ts and E₁ of DLC1.

OK:

Voltage: 10 - 14 V

OK

If ABS warning light does not blink even after Ts and E₁ have been connected, ECU may be defective.

NG

- | | |
|---|---|
| 2 | IG switch OFF, and check for open and short circuit in harness and connector between skid control ECU and DLC1, DLC1 and body ground (See page IN-28). |
|---|---|

NG

Repair or replace harness or connector.

OK

Check and replace skid control ECU.